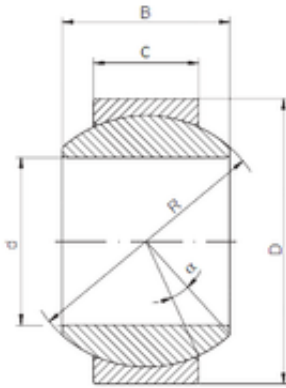




Shandong Zhaoyue Bearing Co., Ltd.

10 mm x 22 mm x 12 mm ISO GE 010 HS
kostourismconferences.com



Bearing No. GE 010 HS

Size	10x22x12 mm
Bore Diameter	10 mm
Outer Diameter	22 mm
Width	12 mm
d	10 mm
D	22 mm
B	12 mm
C	7 mm
R	18 mm
Angle	18 °

GE 010 HS Bearing 2D drawings and 3D CAD models